

Regions of California



GET TO KNOW OUR DIVERSE STATE



THE FOUR REGIONS

California is a diverse state with many bioregions that make it unique from other states. Do you remember the four regions?



The four main regions that make up California are (1) the coast, (2) the desert, (3) the mountains, and (4) the Central Valley.

1 The Coastal Region

The California Coast includes 840 miles of coastline. The northern coast is cooler and wetter which supports forests, while the southern coast is warmer and drier and nurtures chaparral and shrubby plants.



2 The Desert Region

This region is more extreme in wide temperature swings and very high summer temperatures. Despite little rainfall, it is still home to a variety of plants and animals (and even humans!)



3 The Mountain Region

Over half the state is covered in mountains. The melting snow from the mountains creates water for cities and farms.



4 The Central Valley

This area is one of the most productive agricultural regions in the world.

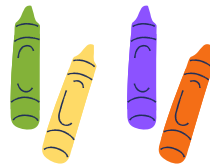


HANDS ON ACTIVITY

Open up the "[Hands On Activity](#)" for this lesson and print it or open it on your computer. Gather a green, yellow, purple and orange crayon, pencil, or marker.

Using the knowledge you have already learned in class, can you color in the four regions in an outline of California?

Green will represent the Central Valley.
Yellow will represent the coast.
Purple will represent the mountains.
Orange will represent the desert.



Take a few minutes to color in the state, putting the matching color for the regions in the correct part of the state. Once you have colored California, take a black crayon, pencil, or marker and draw symbols for types of animals, plants, and landforms that could be found in each region. If you have visited a region, put a star on it.

How do I do the Hands On Activity online?



You can use the Chrome [extension Kami](#) to complete your YIN activities on your phone or computer! Check out [this video](#) to learn more about Kami.

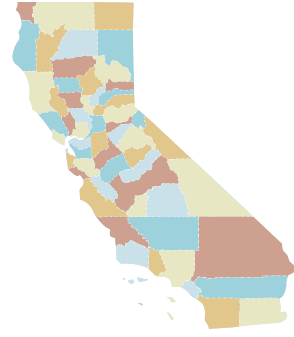
If you are using a computer, just add the Kami extension to your Chrome and open the "Hands On Activity" with the link below or from the lessons page.

If you are on a phone or tablet, make sure you have the [Chrome](#) and [Drive](#) apps installed and save the "Hands On Activity" to your Drive.

Visit the Kami web viewer and open the activity in your Drive folder.

If you want to print your activity and lesson guide at home, visit the "Hands On Activity" link to find a printable copy of the entire lesson.

TAKEAWAYS



California is not only home to just regions but lots of public open spaces in those regions. Can you think of any special places or have you visited any of these spaces?

Share a story with a friend or with your teacher about a California region or special place you've visited.

Now that you've completed your map of California, take a look at [the key](#) and see how close you got.

Let's take a few minutes to think on our unique state.

- What makes the California Coast a coast?
- What states are next to California?
- What country is just to the south of California?
- How about the mountains? What three ranges are in California?

The California desert has places like Joshua Tree and Death Valley National Parks. The coast has beaches like Santa Cruz, Half Moon Bay, and the Redwood Forest. The mountain region features Lake Tahoe, Yosemite and Lassen National Parks. And how about the Central Valley? Perhaps you have visited Sacramento, Tracy, or a farm stand selling fruits, nuts, and veggies.

Just like California, Livermore is a unique place with hills, agriculture, seasonal streams, and contains a variety of open spaces that you can enjoy! What are your favorite places in Livermore or in the Tri-Valley? Write out a list and share it with your family.

